

**STATE BANK OF INDIA, CHATTOGRAM BRANCH INVITES SEALED
TENDERS FROM THE REPUTED INTERIOR DESIGNING FIRMS OF
BANGLADESH FOR THE IMPLEMENTATION OF INTERIOR DESIGN
AND DECORATION OF THE PROPOSED PREMISES OF
STATE BANK OF INDIA CHATTOGRAM BRANCH**

Following documents to be submitted by the prospective interior Designing Firms:

1. Experience certificate/summary of activity
2. Valid Trade license
3. ETIN and other
4. Quotation must be sent in a sealed cover, duly super scribed as “Tender for Implementation of Interior design and decoration of the proposed premises of State Bank of India, Chattogram branch as per approved design” to this office on the given date & time on the address given as below.

REQUEST FOR PROPOSAL (RFP) TO BE SUBMITTED
BETWEEN **18.04.2024** (10:00 AM) and **25.04.2024** (5:00 PM)

ADDRESSED TO:

CHIEF EXECUTIVE OFFICER

STATE BANK OF INDIA, CHATTOGRAM BRANCH

Hoo plaza, 263/1, Jubilee Road, Chattogram

Contact person: Bipul Ghosh, Cell: 01325074291(10:00 am to 05:00 pm)

Pre-Bid Meeting Date: **21.04.2024** (11:00 AM) at above mentioned address for further clarification, if any.

State Bank of India will not be liable for any delay arising out of any reason even in case of postal delay, while submitting the Tender application.

Tentative date for opening of tender, evaluation and vendor selection is on **28.04.2024**. SBI reserves the right to reject any or all the offers without assigning any reasons whatsoever. SBI will not entertain any further correspondence with the companies who are declared unsuccessful.

Tender details, Bill of Quantity(BOQ) and proposed Design can be downloaded from our official website, i.e. <https://bd.statebank/notice>

Terms & Conditions

- Operators will have to furnish original statutory documents pertaining to the firm upon award.
- The Authority reserves the right to -
 1. Explain or clarify the terms of this tender notice in its own way,
 2. Bring necessary changes in the notice
 3. Increase or decrease the tender quantity

4. Reject the lowest
5. Reject any or all bids
6. Select any bidder deems fit and proper by them
7. Design could be changed partially at the time of implementation, as per suitability of premises.

State Bank of India can perform all the above things without assigning any reason. The bidder/supplier shall have no right to challenge the decision of the SBI authority in any court of law or to any arbitrator.

Selection Process:

Score will be fixed from both technical and financial bid through a formula with equal weightage on L1 and qualitative factors as in Technical Criteria.

Financial Scores will be assigned as under:

L1 =10

L2= 8

L3= 6

Technical Bid Format:

Sl. No	Parameter of Technical Score	No.
1.	Experience in interior Design(No. of years)	
2.	Total No. of clients served till date	
3.	Average annual Turnover in last 3 Financial years	

Financial Bid Format:

Details	Price Bid	Other Cost	Total Cost

(Price excluding VAT)

Name of the Bidder :
 Designation of the Bidder :
 Company Name :
 Business Address :
 Mobile No. :
 Email ID :

PROPOSED INTERIOR DESIGN

FOR



STATE BANK OF INDIA

CHITTAGONG BRANCH

BY



60 FEET WIDE ROAD



PROPOSED LAYOUT

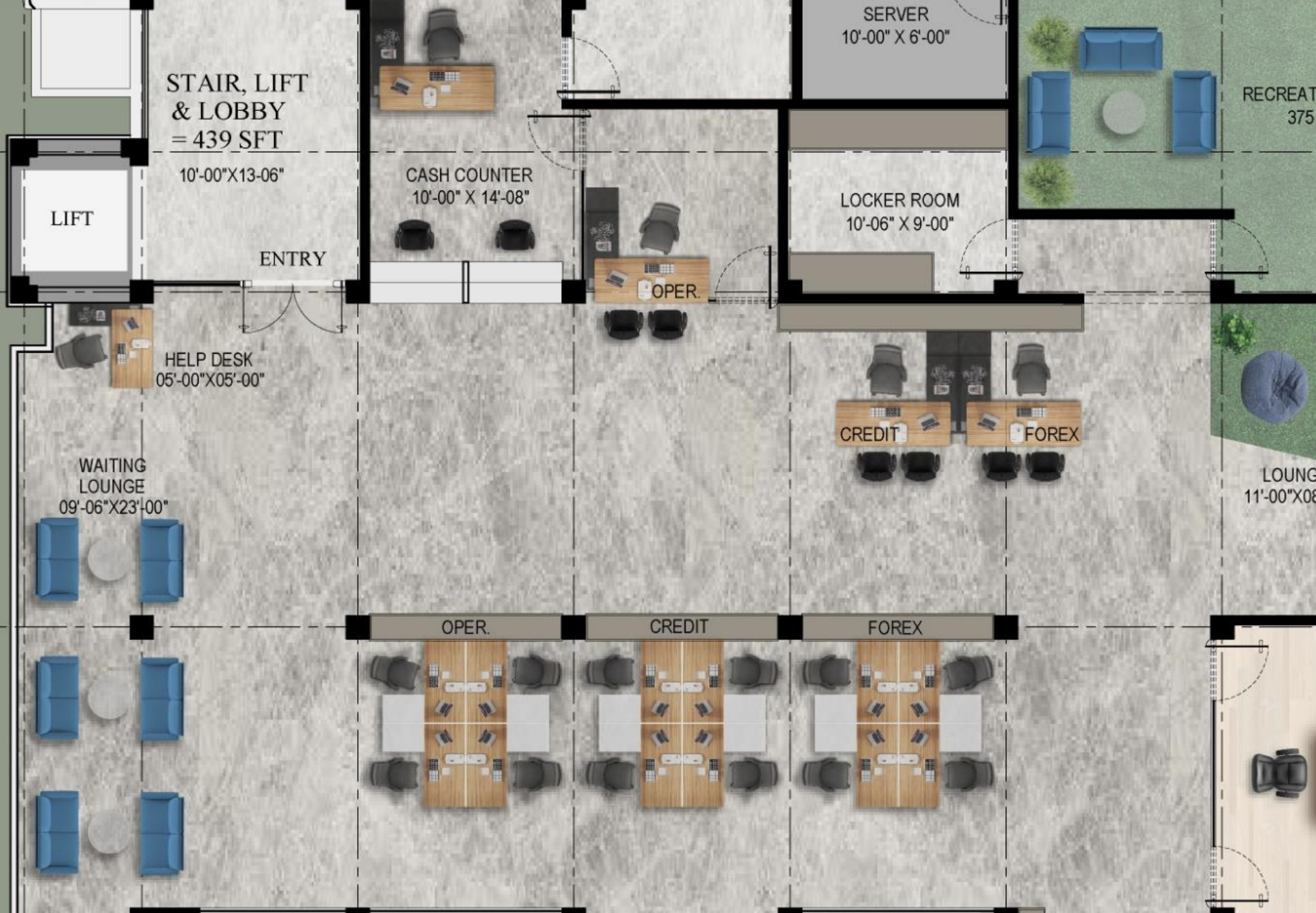


 SBI



VIEW FROM MAIN ENTRY





**LIFT LOBBY,
GENERAL
DESK ZONE,
CASH
COUNTER,
LOCKER
ROOM,
RECREATION
ZONE**



OSBI

LIFT LOBBY AREA



SBI

LIFT LOBBY AREA



A 3D architectural rendering of a lift lobby area. The focal point is a wall composed of numerous vertical, dark-colored slats. Mounted on this wall is the SBI logo, which consists of a blue circle with a white dot inside, followed by the letters 'SBI' in a bold, blue, sans-serif font. The ceiling is a dark, layered structure with recessed linear lighting strips and two spotlights. The floor is a light-colored, polished material. To the right, a glass partition reveals an office space with desks, computers, and modern lighting.

SBI

LIFT LOBBY AREA





VIEW FROM MAIN ENTRY



ENTRANCE LOBBY WITH WAITING





SBI

HELLO

ENTRANCE LOBBY WITH WAITING



WAITING AREA



WAITING AREA

OSB



HELLO

437

HELLO



HELP DESK



CASH COUNTER



CASH COUNTER



GENERAL WORKSPACE



GENERAL WORKSPACE



HOD DESK ZONE



HOD DESK ZONE



HOD DESK ZONE

**THINK
BIG!**



EXECUTIVE DESK ZONE



EXECUTIVE DESK ZONE



EXECUTIVE DESK ZONE



HOD TO EXECUTIVE DESK ZONE



LOCKER ZONE



LOCKER ZONE



RECREATION LOUNGE



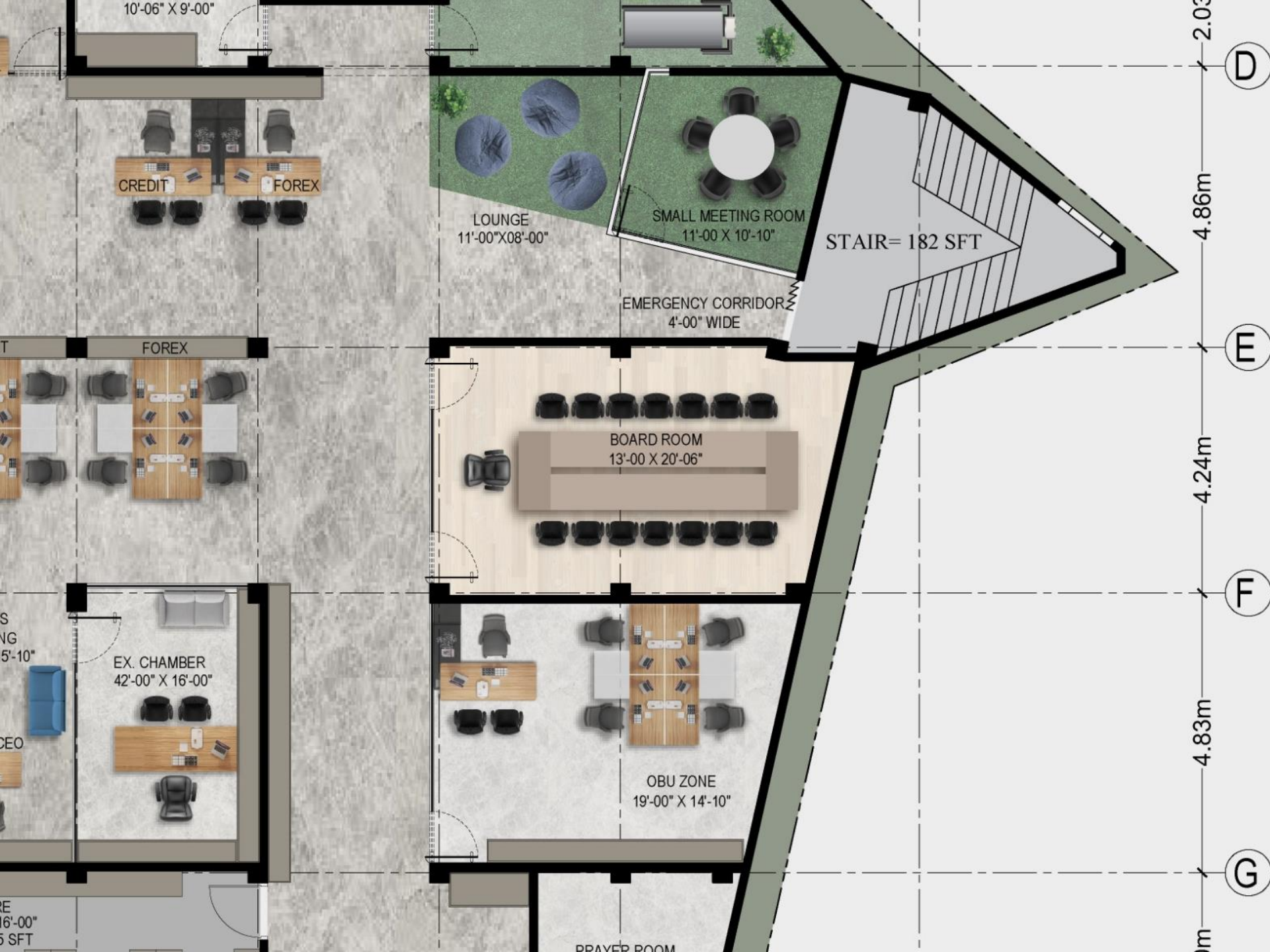
RECREATION LOUNGE



RECREATION LOUNGE



RECREATION LOUNGE



OBU ZONE & MEETING ROOMS



OBU ZONE



OBU ZONE



OBU ZONE



LARGE MEETING ROOM



LARGE MEETING ROOM



LARGE MEETING ROOM



LARGE MEETING ROOM



**THINK
BIG!**

SMALL DISCUSSION ROOM



SMALL DISCUSSION ROOM



SMALL DISCUSSION ROOM



SMALL DISCUSSION ROOM



SMALL DISCUSSION ROOM





CEO SIR,
EXECUTIVE
CHAMBER &
PS TO CEO
DESK

PS TO CEO DESK



SENIOR EXECUTIVE CHAMBER



SENIOR EXECUTIVE CHAMBER



SENIOR EXECUTIVE CHAMBER



SENIOR EXECUTIVE CHAMBER



CEO SIR'S CHAMBER



CEO SIR'S CHAMBER



CEO SIR'S CHAMBER



CEO SIR'S CHAMBER

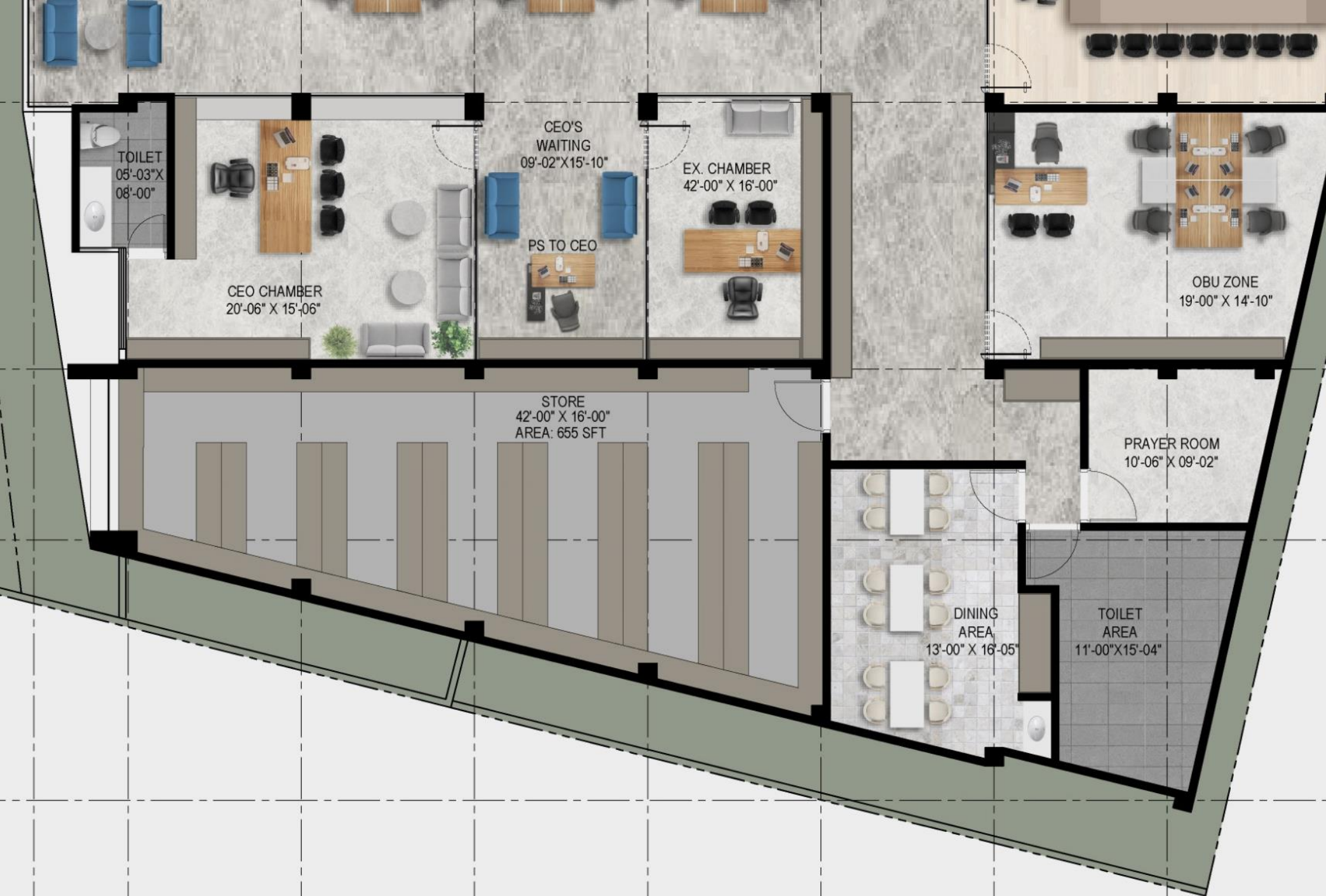


CEO SIR'S CHAMBER



CEO SIR'S CHAMBER





SERVICE BLOCK (STORAGE, DINING & PRAYER ROOM)

CORRIDOR TOWARD SERVICE AREA



CORRIDOR TOWARD SERVICE AREA



STORAGE AREA



STORAGE AREA



DINING AREA



DINING AREA



THANK YOU



SPECIFICATION CHART

SL.	ITEMS	SPECIFICATIONS
01	Dry Wall	Main Structure: Metal channel / Gorjon wood Outer Material: 12mm Gypsum / Particle Board Finish : 03 coats of matte plastic paint Color: As per consultant's guideline
02	RCC Wall	150mm RCC CAST wall with adequate Shutter and reinforcement as per Engineer & Authority Approval
03	Plain Panel Wall	Main Structure: Particle Board / Plywood Outer Material: 12mm Gypsum / Particle Board Finish : 03 coats of matte plastic paint Color: As per consultant's guideline
04	Louver Panel Wall	Main Structure: Particle Board / Plywood Outer Material: 12mm Gypsum / Particle Board Finish : 03 coats of matte plastic paint Color: As per consultant's guideline
05	Feature Wall	Main Structure: Particle Board / Plywood Outer Material: 10mm Tempered Glass Finish : 03 coats of matte plastic paint or rear side Color: As per consultant's guideline
06	Plain Ceiling	Main Structure: Metal channel / Gorjon wood Outer Material: 12mm Gypsum / Particle Board Finish : 03 coats of matte plastic paint Color: As per consultant's guideline
07	Louvered Ceiling	Main Structure: Metal channel / Gorjon wood Outer Material: 12mm Gypsum / Particle Board Finish : 03 coats of matte plastic paint Color: As per consultant's guideline
08	Planter Box	Main Structure: 18mm Laminated Particle Board Color: As per consultant's guideline
09	Light Box	Main Structure: Particle Board Size: 100 X 300 X 2400 mm Finish : 03 coats of matte plastic paint Color: As per consultant's guideline

DÉCOR ITEMS

FURNITURES	10	Cabinet Low Height	Main Structure: 18mm Laminated Particle Board Hardware: imported SS hardware & handle Color: As per consultant's guideline Dimension: 2'-06" (H) X 1'-06" (D)
	11	Cabinet Full Height	Main Structure: 18mm Laminated Particle Board Hardware: imported SS hardware & handle Color: As per consultant's guideline Dimension: 8'-00" (H) X 1'-06" (D)
	12	Help Desk	Main Structure: 18mm Laminated Particle Board Hardware: imported SS hardware & handle Color: As per consultant's guideline
	13	Cash Counter	Main Structure: 18mm Plywood Particle Board lower Desk : Laminated Particle Board Upper Deck : 10mm Tempered Frosted Glass with Illumination Harddware: imported SS hardware & handle Color: As per consultant's guideline
	14	Executive Desk	Legs: Powder Coated MS Box Legs (25 X 75mm X1.5mm Thikness) Desk Top: 25mm Particle Board Color: As per consultant's guideline
	15	HOD Desk	Legs: Powder Coated MS Legs Desk Top: 25mm Particle Board Color: As per consultant's guideline
	16	CEO Desk Setup	Legs: Lacquer finish OAK Vineer Board Desk Top:Lacquer finish OAK WOOD Color: As per consultant's guideline
	17	Small Meeting Table	Legs: Powder Coated MS Legs Desk Top: Lacquer finish Vineer Board Color: As per consultant's guideline
	18	Conference Table	Legs: Lacquer finish Vineer Board Desk Top: Lacquer finish Vineer Board Color: As per consultant's guideline
	19	Dining Table	Legs: 18mm Particle Board Desk Top: 18mm Particle Board Color: As per consultant's guideline

20	Breakout Table	Legs: Powder Coated MS Legs Desk Top: 10mm Clear Glass Color: As per consultant's guideline
21	CPU Tray	1200 X 1200 X 100 (mm) trolley with 05 wheels made of 18mm melamine board.
22	Drawer Unit	Main Structure: Laminated Particle Board Hardware: imported SS hardware, 3part channel & handle Color: As per consultant's guideline Dimension: 2'-00" (H) X 1'-04" (D) X 1'-04" (L)

CHAIRS & SEATINGS	23	Executive Chair*	Main Frame: Chrome finished metal Upholstry: Woven Fabric Lumber Support: Medium Back Ground Support: Cluster wheel with hydraulic push back Country of origin: Malayasia / China
	24	HOD Chair*	Main Frame: Chrome finished metal Upholstry: Woven Fabric Lumber Support: High Back Ground Support: Cluster wheel with hydraulic push back Country of origin: Malayasia / China
	25	CEO Chair*	Main Frame: Chrome finished metal Upholstry: Genuine / PU Leather, flexible wiremesh Lumber Support: High Back with Head rest Ground Support: Cluster wheel with hydraulic push back Country of origin: USA / Malayasia
	26	Visitor Chair*	Main Frame: Chrome finished metal Upholstry: Woven Fabric / PU Leather Lumber Support: Medium Back Ground Support: Fixed leg with anti slip stopper Country of origin: Malayasia / China / Local
	27	Single Seater Sofa*	Main Frame: Metal / Wood Upholstry: Woven Fabric / PU Leather Lumber Support: Medium Back Ground Support: Fixed leg with anti slip stopper Country of origin: Local / China

C	28	Double Seater Sofa*	Main Frame: Metal / Wood Upholstry: Woven Fabric / PU Leather Lumber Support: Medium Back Ground Support: Fixed leg with anti slip stopper Country of origin: Local / China
	29	Waiting Sofa	Main Frame: Metal / Wood Upholstry: Woven Fabric / PU Leather Lumber Support: Medium Back Ground Support: Fixed leg with anti slip stopper Country of origin: Local / China
	30	Bean Bag	Local made XL size Bean Bag with Leg Support
	31	Cozy Chair*	Main Frame: Metal / Wood Upholstry: Woven Fabric / Formcast PPG Lumber Support: Medium Back Ground Support: Fixed leg with anti slip stopper Country of origin: Local / China

GLASS ITEMS	32	Glass Partition	10mm tempered clear glass partition fitted with aluminium / SS U channel, accessories and silicon gel.
	33	Glass Door (with long handle)	3'-00" X 8'-00" 10mm tempered glass door with cusotm made 4'-00" handle, stainless steal hinge, fittings, bottom lock and all accessories.
	34	Glass Door (with short handle)	3'-00" X 8'-00" 10mm tempered glass door with regular 1'-00" handle, stainless steal hinge, fittings, bottom lock and all accessories.
	35	Frosted Sticker	Supply and installation of Plain opaque glass sticker

36	Circuit Breaker (SP) (10-32A)	Brand:, ABB / Schneider / EATON Rating: 10-32A
37	TP MCB 32A	Brand:, ABB / Schneider / EATON Rating: 32A

ELECTRIC ITEMS	38	DB	Brand:, HAVELLS Rating: N/A
	39	MCCB (160A)	Brand:, ABB / Schneider / EATON Rating: 160A
	40	4 Gang Switch	Brand:, ArtDNA Model: Must be approved by architect
	41	Multi Socket	Brand:, ArtDNA Model: Must be approved by architect
	42	Cable Tray 8"	Size: 8" X 2" Tray material: 20-22gauge Perforated MS Sheet with matte enamel paint Support: MS thread Rod with washer and nut
	43	PVC Pipe	Brand:, NPoly / RFL / Equivalent Size: As Required
	44	Switch Box	PVC/ Plastic conceal box
	45	LED T5 Tube Light	LED Tube light with all necessary accessories Power Draw: 16-18W Color Temperature : 4500-5000k Brand:, Pasha / RFL / SuperStar / Similar Grade
	46	LED Spot light	LED Spot light with all necessary accessories Power Draw: 8-10W Color Temperature : 2500-3000k Brand:, Pasha / RFL / SuperStar / Similar Grade
	47	Cable 1.50 RM	Brand:, BRB
	48	Cable 2.50 RM	Brand:, BRB
	49	Cable 4.00 RM	Brand:, BRB
	50	Cable 1.50 RE	Brand:, BRB
	51	Cable 2.50 RE	Brand:, BRB
	52	Cable 35.0 RM	Brand:, BRB

53	Track Light 20W	LED Track light with all necessary accessories Power Draw: 20W Color Temperature : 2500-3000k Brand:, Pasha / RFL / SuperStar / Similar Grade
54	HDMI Cable	Imported Cable supporting 1080p FHD
55	Moving Fan (MIRA)	16" wall mount MIRA Moving Fan
56	40W Bracket Light	LED Tube light with all necessary accessories Power Draw: 16-18W Color Temperature : 4500-5000k Brand:, Pasha / RFL / SuperStar / Similar Grade
57	Television	Brand:, SONY / SAMSUNG / LG Rating: 43" 1080p smart TV

LAN & Wifi	58	LAN Cable CAT-6	Brand: Panduit / Rosenberger Model: CAT-6 23AWG Unshielded Twisted Pair CAT6 (as per EIA/TIA Standards) Cable Box of 305 Metre with star filler.
	59	Faceplate	Brand: Rosenberger 2-port single gang faceplate outlets, white, Faceplates include designation labels, clear label cover(s)
	60	Moduler Jack	Brand: R & M Model: R810598 23AWG Unshielded Twisted Pair CAT6 (as per EIA/TIA Standards) Cable Box of 305 Metre with star filler. Category 6 Flat MAX outlet, T568A/B, rear strain relief cap, exceptional margin on all parameters beyond Category 6 exceeding connecting hardware and channel performance specifications set forth for Category 6/Class E by the ISO/IEC
	61	Patch Cord	Brand: Rosenberger Model: CP61-425-1P0 Category 6, UTP patch cord with modular plugs on each end.
	62	Wifi AP	Brand: Ubiquiti Model: UAP-AC-PRO 1750Mbps 11AC Dual Band Wireless Ceiling AP

	63	POE Network Switch	Brand: Grandstream Model: GWN7803P 24-port 10/100/1000 PoE+ Managed Switch w/Gig Uplinks
	64	Router	Brand: MIKROTIK Model: CCR1036-8G-2S+EM Router BOARD with 1U rack mount case (UK) 8 Ports Gigabit Copper, 1xSFP
CC CAMERA	65	4MP Bullet Camera	Brand: Dahua Model: IPC- HFW2431TP/AS-S2 HDW2431SP · 4MP, 1/3" CMOS image sensor, low luminance, high image definition · Outputs 4MP (2560 × 1440)@25/30fps, Max. supports 4MP (2688 × 1520)@20 fps · H.265 coding, high compression ration, low bit rate · Built-in IR LED, max IR distance: 30 m · ROI, SMART H.264/H.265, flexible coding, applicable to various bandwidth and storage environments · Rotation mode, WDR, 3D DNR, HLC, BLC, digital watermarking, applicable to various monitoring scenes · Intelligent detection: Intrusion, tripwire · Abnormality detection: Motion detection, video tampering, no SD card,
	66	NVR	Brand: Dahua Model: IPC- HFW2431TP/AS-S2 HDW2431SP H.265/H.264 codec decoding · Max 80Mbps incoming bandwidth · Up to 16mp resolution preview playback · Up to 1ch@16MP/4ch@1080P decoding · HDMI/VGA simultaneous video output Internal HDD 4 SATA III Port, up to 10TB capacity for each HDD
	67	HDD	Brand: Toshiba / Seagate 10 TB Surveillance HDD

ACCESS CONTROL	68	Biometric Access Control Unit	Brand: ZKTeco Model: SFace900 Capacity: Face 3,000, Fingerprint 4,000 ID Card Capacity 10,000 Log Capacity 1,00,000 4.3-Inch Touch Screen Display
	69	Magnetic Door Lock	Brand: ZKTeco Model: LM-2802 Compatible with wooden doors, metal, glass doors, and fireproof doors Holding force 280Kg (600Lbs) Working Voltage: DC 12V/24V input LED indicators indicating the status of the door
	70	Exit Button	Brand: ZKTeco Model: TLEB101-R Exit Button with Remote Operating Distance: 10 Meter
HVAC	71	3.0 Ton Cassette AC	Brand : GREE / Daikin / Samsung / Similar Capacity: 3.00 TON (36000 BTU) Mounting Type : Cassette type Cooling Tech : Inverter
	72	Copper Pipe with insulation	Pure COPPER pipe with specified diameter and thickness by Air Condition Manufacturer with adequate thermal insulation
	73	#REF!	Adequate Sprinkler, Heat Detector, Smoke Detector, Gas Suppression System with proper pressurized pipe / pumps and other parts. note: must be approved by consultant before execution
	74	Roller Blind	Installation of plain roller blinds with manual operation system
	75	General Plumbing Works**	All necessary plumbing works remains, excluding the items mentioned above and any items provided by the asset owner.

OTHER ITEMS

76	Grass Carpet	Imported GRASS Fabric carpet as per Architects Design Thickness: 20-25 mm
77	Raised Flooring for Small Meeting	Main Structure: Plywood Thickness: 100 mm
78	Raised Flooring for Server Room	Main Structure: MS / Aluminium Top: Anti Static Flooring
79	Treadmill for Recreation	Imported Electric DC Motorised Trademill Capacity: 100kg min. Motor Power : 2.0HP min.
80	Branding & Signage (Interior)**	01. Making, fabricating, supply, fitting and fixing of signage work using Top Part 18 SWG MS Box Type Letter CNC Cutting, 20 SWG MS Side border depth 1.5", With asper color do co paint, Hei Setting, Best quality LED Light, Back Light 30 MPR Power supply, warring cable, making finishing fitting fixing complete. Size : 900mm X 400mm Quantity: 02 nos 02. 10mm Imported Acrylic hanging nameplate with UV printed BACK PLATE, suspended with SS chain Size : 600mm X 200mm Quantity: 30 nos
81	Branding & Signage (Exterior)**	01. Making, fabricating, supply, fitting and fixing of signage work using Top Part 18 SWG MS Box Type Letter CNC Cutting, 20 SWG MS Side border depth 1.5", With asper color do co paint, Hei Setting, Best quality LED Light, Back Light 30 MPR Power supply, warring cable, making finishing fitting fixing complete. Size : 900mm X 400mm Quantity: 02 nos
82	Paint Work	03 coats of matte plastic paints, as per consultants guideline.
83	Notice Board	Main Frame: Particle Board Upholstry: Woven Fabric with Rubber insole
84	Front Shutter	Manual See Through Roling Shutter Material: 12mm MS Rod
85	Site management & maintaining Cost	All cost including cleaning, mobilization, Project architect, Site Engineer, Security Staff's Salary,

BOQ (Bill of Quantity)

	SL.	ITEMS	QUAN.	UNIT
DÉCOR ITEMS	01	Dry Wall	3430	SFT
	02	RCC Wall	430	SFT
	03	Plain Panel Wall	30	SFT
	04	Louver Panel Wall	130	SFT
	05	Feature Wall	150	SFT
	06	Plain Ceiling	1238	SFT
	07	Louvered Ceiling	748	SFT
	08	Planter Box	24	PC
	09	Light Box	340	RFT
FURNITURES	10	Cabinet Low Height	136	SFT
	11	Cabinet Full Height	1262	SFT
	12	Help Desk	1	PC
	13	Cash Counter	10	RFT
	14	Executive Desk	18	PC
	15	HOD Desk	5	PC
	16	CEO Desk Setup	2	PC
	17	Small Meeting Table	1	PC
	18	Conference Table	1	PC
	19	Dining Table	3	PC
	20	Breakout Table	9	PC
	21	CPU Tray	4	PC
	22	Drawer Unit	28	PC
S & SEATINGS	23	Executive Chair*	26	PC
	24	HOD Chair*	3	PC
	25	CEO Chair*	3	PC
	26	Visitor Chair*	6	PC
	27	Single Seater Sofa*	2	PC
	28	Double Seater Sofa*	4	PC

CHAIR

29	Waiting Sofa	6	PC
30	Bean Bag	5	PC
31	Cozy Chair*	4	PC

GLASS ITEMS	32	Glass Partition	640	SFT
	33	Glass Door (with long handle)	10	PC
	34	Glass Door (with short handle)	4	PC
	35	Frosted Sticker	320	SFT

ELECTRIC ITEMS	36	Circuit Breaker (SP) (10-32A)	50	PC
	37	TP MCB 32A	10	PC
	38	DB	1	PC
	39	MCCB (160A)	2	PC
	40	4 Gang Switch	36	PC
	41	Multi Socket	175	PC
	42	Cable Tray 8"	250	RFT
	43	PVC Pipe	5000	RFT
	44	Switch Box	211	PC
	45	LED T5 Tube Light	287	PC
	46	LED Spot light	79	PC
	47	Cable 1.50 RM	45	COIL
	48	Cable 2.50 RM	45	COIL
	49	Cable 4.00 RM	17	COIL
	50	Cable 1.50 RE	15	COIL
	51	Cable 2.50 RE	7	COIL
	52	Cable 35.0 RM	3	COIL
	53	Track Light 20W	29	PC
	54	HDMI Cable	220	RFT
55	Moving Fan (MIRA)	5	PC	
56	40W Bracket Light	20	PC	
57	Television	1	PC	

LAN & Wifi	58	LAN Cable CAT-6	13	BOX
	59	Faceplate	60	PC
	60	Moduler Jack	120	PC
	61	Patch Cord	60	PC
	62	Wifi AP	6	PC

71

63	POE Network Switch	1	PC
64	Router	1	PC

CC CAMERA	65	4MP Bullet Camera	16	BOX
	66	NVR	1	PC
	67	HDD	1	PC
ACCESS CONTROL	68	Biometric Access Control Unit	2	PC
	69	Magnetic Door Lock	2	PC
	70	Exit Button	2	PC
HVAC	71	3.0 Ton Cassette AC	6	PC
	72	Copper Pipe with insulation	500	RFT
OTHER ITEMS	73	Roller Blind	105	SFT
	74	General Plumbing Works**	1	JOB
	75	Grass Carpet	950	PC
	76	Raised Flooring for Small Meeting	137	SFT
	77	Raised Flooring for Server Room	60	SFT
	78	Treadmill for Recreation	1	PC
	79	Branding & Signage (Interior)**	1	JOB
	80	Branding & Signage (Exterior)**	1	JOB
	81	Paint Work	9684	SFT
	82	Notice Board	80	SFT
	83	Front Shutter	100	SFT
84	Site management & maintaining Cost	1	JOB	